

WELCOME TREE STEWARDS

of Arlington and Alexandria, Virginia

Class of 2018



Tree Stewards

ARLINGTON · ALEXANDRIA



What will we do this evening?

- Introduce ourselves
- Provide you with info about Tree Stewards
- Why are trees so important?
- Discuss TS training – how it will proceed
- Volunteer opportunities
- Share some tree-related materials with you



Red Maple (*Acer rubrum*)

Who are we all?

- First introduce all Tree Stewards in room:
 - Name;
 - Name favorite tree, common and Latin name if possible;
 - What is your main activity within TS?
- Then Trainees – in pairs or trios
 - Introduce yourself to your neighbor
 - Name
 - Why sign up to become a TS?
 - Favorite tree?
 - Neighbor introduce you to the group



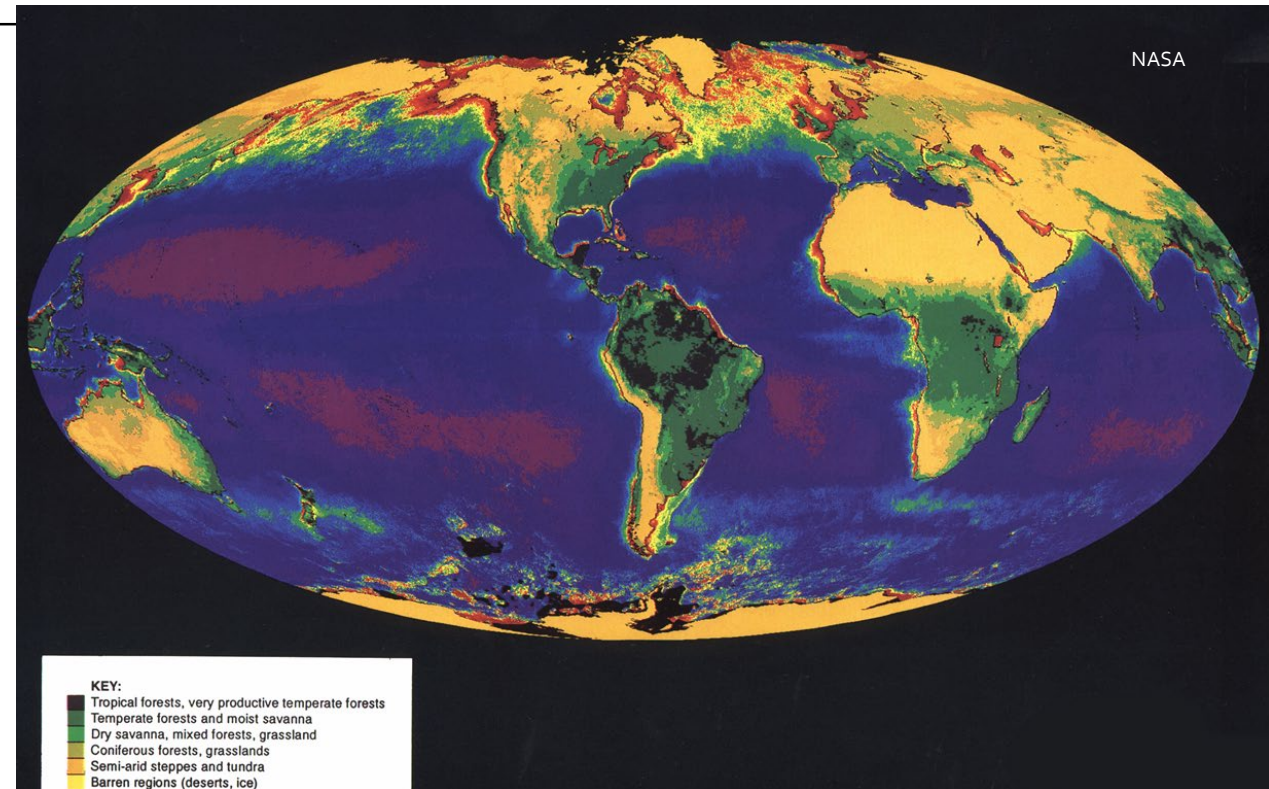
White oak (*Quercus alba*)

What are the Tree Stewards of Arlington and Alexandria?

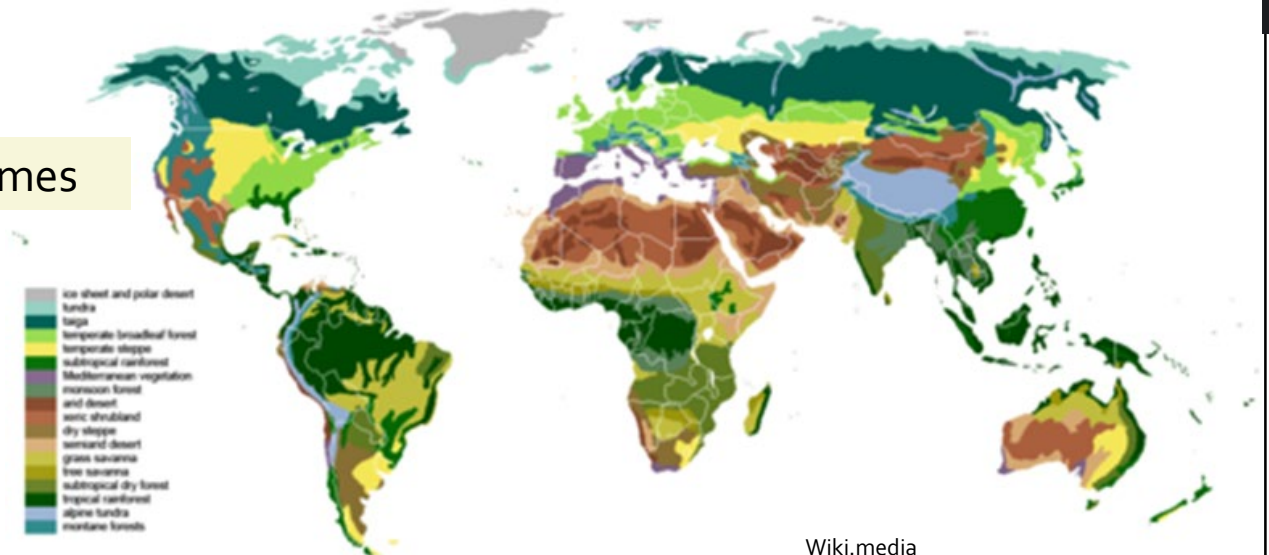
- A bit about the organization:
 - When started and why?
 - Type of organization it is, and how large?
 - Range of activities
 - What can *you* do?
- In 2017 56 TS provided over 4200 volunteer hours worth \$99,330
- TS educated over 2550 people and cared for 3700 trees.

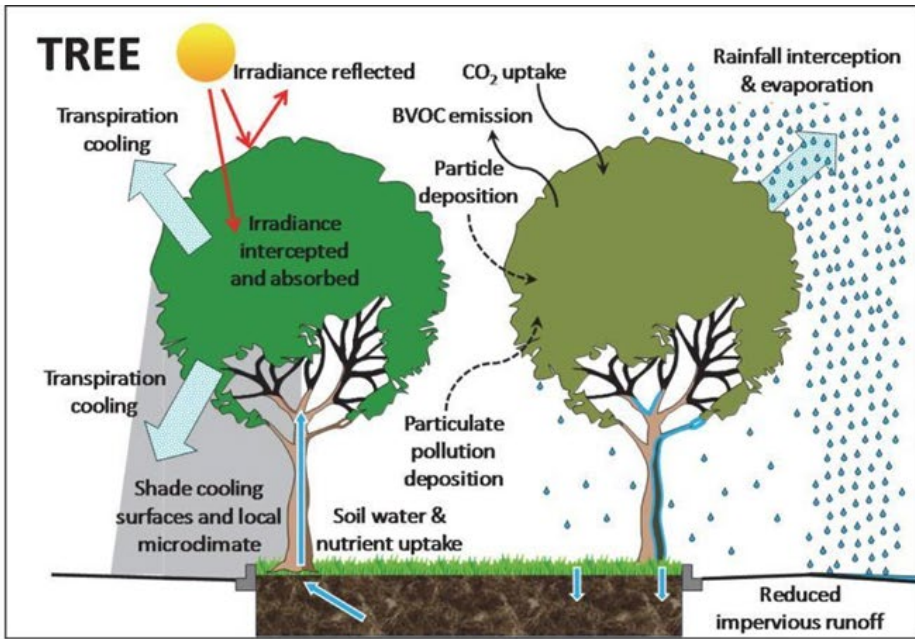
Where do trees grow?

- Not everywhere!
- But they definitely grown in NOVA!
- Natural vegetation patterns changing
 - Deforestation
 - Reforestation
 - Species movement due to climate change
 - Pests
- Increasing importance of urban forests
 - Changing views on this: urban forests?
 - Now seen as increasingly important for urban ecology and as part of global forest coverage

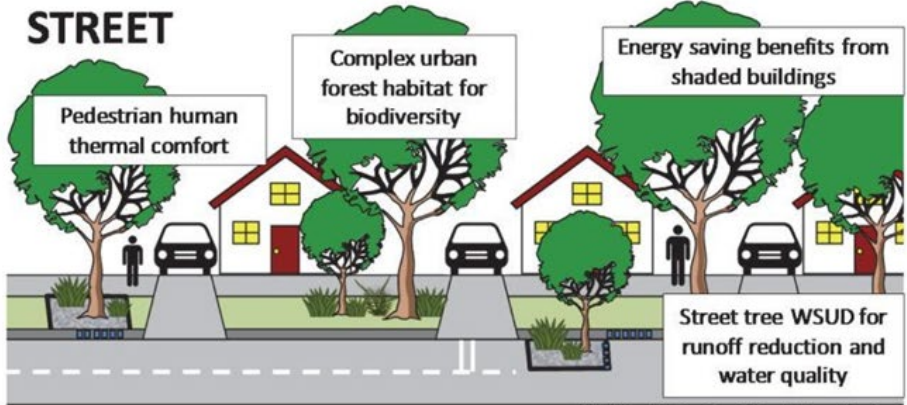


Biomes

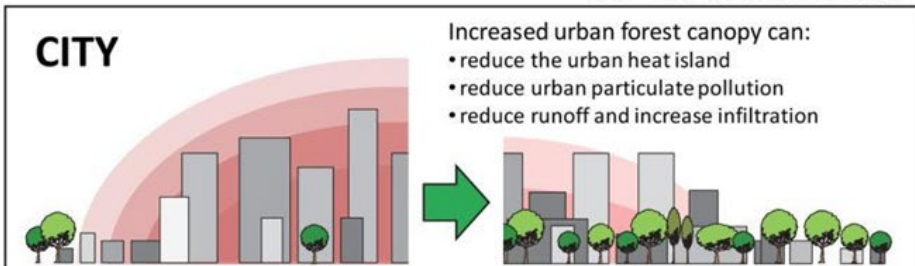




BVOC = Biological volatile organic compounds



WSUD = Water Sensitive Urban Design



Why are trees to important?

- *Environmental* – ecosystem services:

- clean the air;
- micro-climate;
- capture and store carbon;
- mitigates stormwater impact;
- and more...

- At multiple scales: Tree -> Street -> City

Source: Livesley et al. 2016. *Journal of Environmental Quality*. 45: 119-124



More reasons trees are important.

- *Economic* – mature trees add value to neighborhoods (increase property values to 5-10%); reduce cooling bills by 10-15%
- *Aesthetic* – enhances the quality of spaces, tree lined streets, flowering trees
- *Biodiversity - Wildlife* – increases biodiversity



MATURE TREES ARE VALUABLE TREES

It's no secret that large, mature trees add comfort and charm to our lives.

They shade our decks, lower electricity bills, increase property values, and reduce flooding risks. However, as our region continues to grow, there's more concrete and fewer trees and green space. As a home owner, you can help preserve the unique character that makes our region such a desirable place to live.

In just a few simple steps you can keep your large trees healthy and strong, and enjoy the benefits that *only* mature trees can offer. Learn how on the reverse side.

Sponsored by TreeStewards under a grant from the Arlington County Tree Canopy Fund.

How will this TS course proceed?

- Explain the Four Modules and Sessions within each
 - Four modules
 - Classroom work is mixed with practical training
 - Review the actual syllabus together – see handout
 - Assessment after each module
 - Need to complete all four Modules to complete traineeship.
 - What is required and what is not?
 - Volunteer hours.



What are some volunteer opportunities?

- Pruning! [Hugh]
- Planting trees! [Kurt]
- Public Education! [Nora]
- Website and Facebook! [Jo]
- RIPs [Jo]
- Continued TS Training! [Beth]
- Other (Eye on the Parks; Schools; Champion Trees) [Kate or any other TS]

What is in the TS bag of goodies?

- Review the materials in your bag.
- When will you use these?
- Let's go back to your favorite trees:
 - With a different neighbor/ person at your table use the *Common Trees of Virginia* book to
 - Look up your favorite tree and learn its Latin name or at least species name
 - Share these – get in species clusters and meet more TS trainees!
 - *Acer, Quercus, etc.*

When are the next sessions and what are they about?

October 9 homework (Soils for Trees)

- Tree Steward Manual (PDF), Unit 6
 - Types and structure of soil
 - Characteristics that impact trees
 - Soil organisms
 - Tree boxes and Silva cells

October 16 homework (Tree ID lecture)

- Read pages 1-12 in the *Common Native Trees of Virginia* book
 - Become familiar with basic tree parts
 - Basics on using a “key” to do tree ID
 - How to use the book

- Tree Planting, Sat. 10/20 at Columbia Gardens Cemetery, 12-3 pm (required)
- Tree ID walk, Ivy Hill Cemetery, 10/28/18 4-8 pm (Halloween TS Event)
- Tree ID walk, Glencarlyn Park, 11/3/18, 1.30 pm